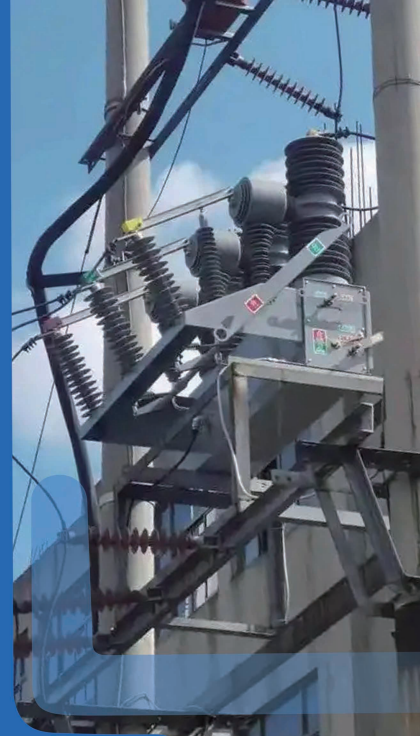




24kV POLE-MOUNTED SWITCHGEAR



DESCRIPTION

HM-ZW32-24/T630-20 pole-mounted switchgear is an out door SF₆ free switchgear mainly used in overhead line which features:

- (1) The product adopts vacuum arcing chamber for arc extinguishing and air insulation, and realizes maintenance free during service period;
- (2) The product designed in a deeply integrated structure.Each pole is configured with CB, CT and voltage sensor;
- (3) Flexible switch configuration to meet customer's different demands;



WhatsApp (+86 139 2548 1380)



sales@hmpower.com.cn



www.hm-switchgear.com



HM POWER (Guangdong) Co.,Ltd

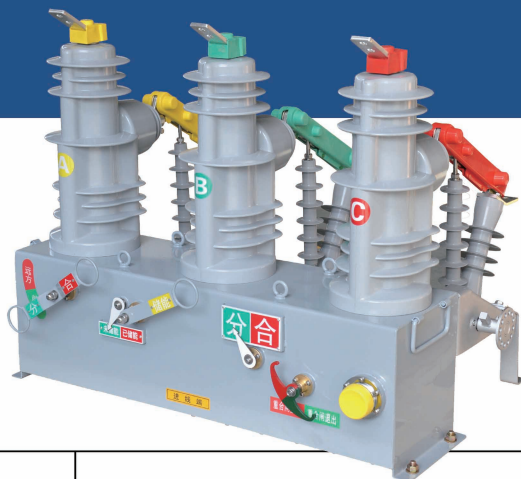
No. 20 Xinyue Road, Shunde Science & Technology Industrial Park, Foshan City, Guangdong Province
China



PARAMETER

24kV

OUTDOOR CIRCUIT BREAKER



Name	Unit	Specification
Rated voltage	kV	24
Rated current	A	630
Rated frequency	Hz	50
Rated short-circuit breaking current	kA	20
Breaking times of rated short-circuit breaking current	time	30
Rated peak withstand current (peak value)	kA	50
Rated short time withstand current (4S)	kA	20
Rated short-circuit making current (peak value)	kA	50
Power-frequency withstand voltage 1min (Phase to phase and phase to earth/Across isolating distance)	kV	50/65
Lighting impulse withstand voltage (Phase to phase and phase to earth/Across isolating distance)	kV	125/145
mechanical life	time	10000
Rated operating sequence		O-0.3s-CO-180s-CO